



GAT MONTHLY MEMBERSHIP PROGRESS REPORT

Results as of: 3/31/2023

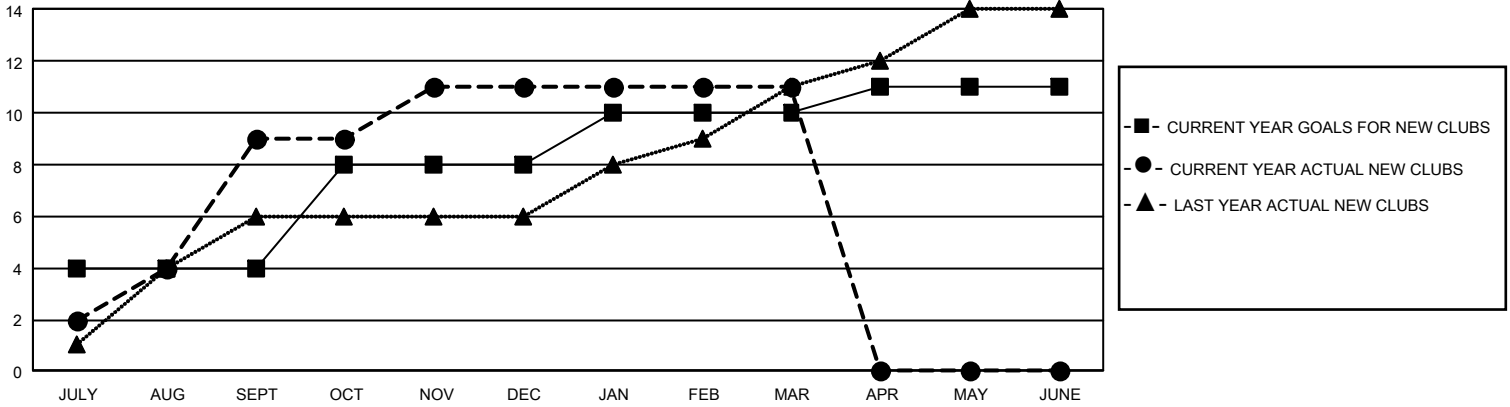
GMT Constitutional Area 5 - E, Group P

REPORT DOES NOT INCLUDE CLUBS IN UNDISTRICTED AREAS.

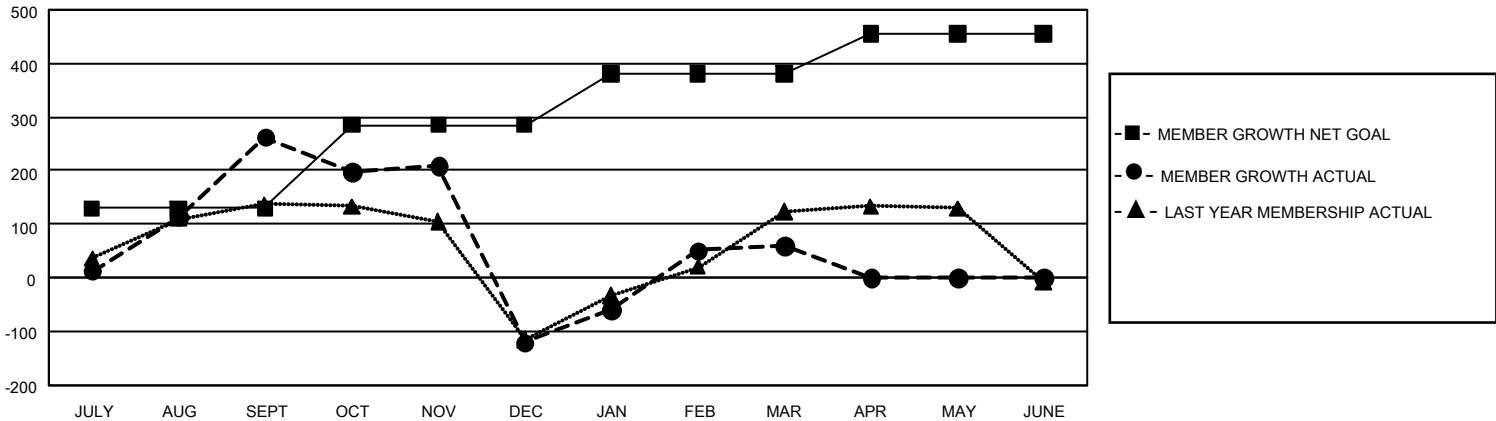
Clubs			
RESULTS FOR 2022-2023			
QUARTER	NEW CLUB GOAL	NEW CLUBS	DROPPED CLUBS
JULY/AUG/SEPT	12	9	4
OCT/NOV/DEC	12	2	2
JAN/FEB/MAR	6	0	0
APR/MAY/JUNE	3	0	0

Members			
RESULTS FOR 2022-2023			
QUARTER	MEMBER GROWTH NET GOAL	MEMBER GROWTH ACTUAL	DROPPED MEMBERS ACTUAL (including transfers)
JULY/AUG/SEPT	130	500	219
OCT/NOV/DEC	155	201	567
JAN/FEB/MAR	95	251	58
APR/MAY/JUNE	75	0	0

GOALS AND ACTUAL NEW CLUBS CUMULATIVE



GOALS AND ACTUAL MEMBERS CUMULATIVE



DROPPED CLUBS: 6	151 CLUBS OF 315 ADDED 1 OR MORE NEW MEMBERS	<u>GENDER DISTRIBUTION</u>	
<u>DROPPED MEMBERS</u>		MALE	3,551 (48.38%)
DECEASED	38	FEMALE	3,789 (51.62%)
CLUB CANCELLED	4	NON BINARY	0 (0.00%)
OTHER	802	PREFER NOT TO ANSWER	0 (0.00%)
TOTAL	844	TOTAL FAMILY UNIT MEMBERS	549
	CLICK HERE FOR CUMULATIVE MEMBERSHIP DATA	FAMILY MEMBERS PAYING HALF DUES	296